



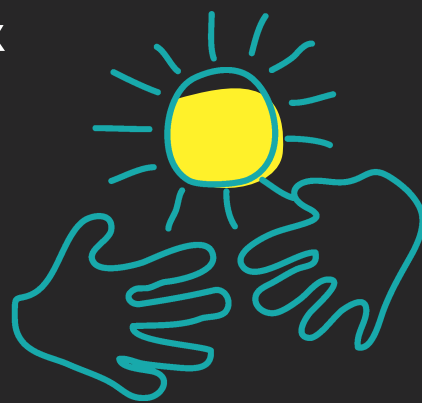
CAF

Want some help with
Worries or problems?

The Common Assessment Framework (CAF) means you can:

- talk to someone who works with you about things that are going well and extra help that you might need;
- work out together what support might be needed and who can help;
- see everything that is written on your CAF form;
- say who the information can be shared with;
- have a choice. CAF can only be done if you agree.

For more information talk to someone who works with you at school, college, Connexions, youth club etc or phone 01634 334325 or email caf.co-ordinator@medway.gov.uk Information is also available by visiting: www.medwaychildrenstrust.co.uk



Medway
COUNCIL
Serving You